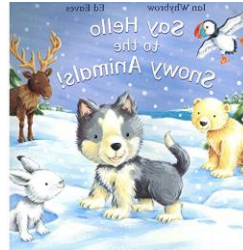
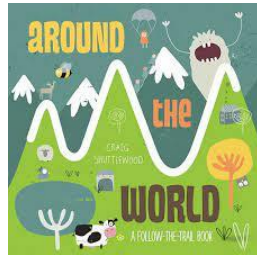
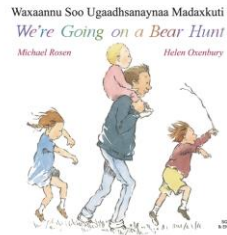


The topic for this term is Extreme Earth

Over half term our younger pupils will be enjoying a variety of sensory stories including:



We will have fun creating our own sensory desert and arctic mini environments, making flour splat mountains and taking part in mountain yoga. We will also try some experiments to make hurricanes and rain in a jar.

Our older learners will be looking at how mountains are formed and working on reading and verbal comprehension skills through texts and videos related to our Extreme Earth topic. The pupils will have the opportunity to work on their own science experiments to make tornados, rain and cloud in a jar.



The maths focus this term is number. For our younger pupils this will involve working on the following concepts:

- 1 and lots
- Saying or labelling numbers 1-5 and for some 1-10
- Counting out motivating numbers from 1-5
- Choosing a weekly number rhyme or song

The older pupils will be working on:

- Confidence in number bonds to 10
- Solving number problems involving the addition and subtraction of single-digit numbers up to 10.



The PSHE focus for this term is on Self Care, Support and Safety, with a focus upon personal hygiene and consent.



Christingle Church Celebrations



On 6th December We will be going to Dane Hill Church for a seasonal Christingle celebration.